

FLOWZAP
Internet Service Provider



LiteBeam[®] AC GEN2

5 GHz airMAX[®] ac Radio with
InnerFeed[®] Technology

Model: LBE-5AC-Gen2

QUICK START GUIDE

Introduction

Thank you for purchasing the Ubiquiti Networks® LiteBeam® 5AC Gen 2 radio. This Quick Start Guide is designed to guide you through installation and also includes warranty terms.

Package Contents



Antenna Feed



Center Reflector Panel



Side Reflector Panels
(Qty. 2)



Feed Receiver



Azimuth Mount



Elevation Mount



Metal Strap



Knob Kit



Gigabit PoE (24V, 0.3A)
with Mounting Bracket



Power Cord



Quick Start
Guide

Products may be different from pictures and are subject to change without notice.

TERMS OF USE: Ubiquiti radio devices must be professionally installed. Shielded Ethernet cable and earth grounding must be used as conditions of product warranty. TOUGH Cable™ is designed for outdoor installations. It is the customer's responsibility to follow local country regulations, including operation within legal frequency channels, output power, and Dynamic Frequency Selection (DFS) requirements.

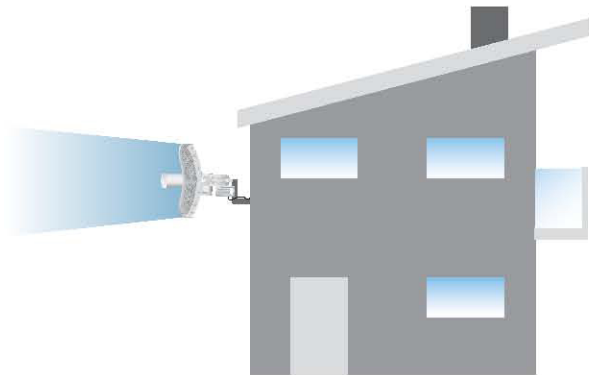
Installation Requirements

- 7 mm socket wrench or screwdriver
- Shielded Category 5 (or above) cabling should be used for all wired Ethernet connections and should be grounded through the AC ground of the PoE.

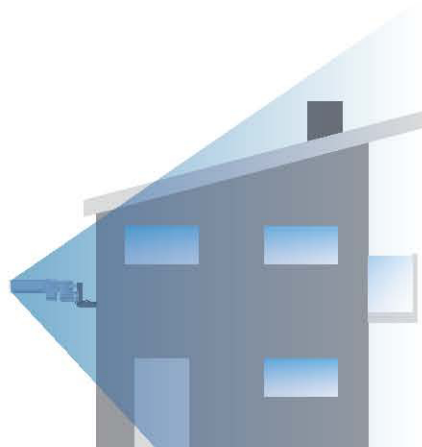
We recommend that you protect your networks from harmful outdoor environments and destructive ESD events with industrial-grade, shielded Ethernet cable from Ubiquiti Networks. For more details, visit www.ubnt.com/toughcable

Application Examples

The LiteBeam AC mounted outdoors with the reflector installed provides directional outdoor coverage (gain reflector-dependent).



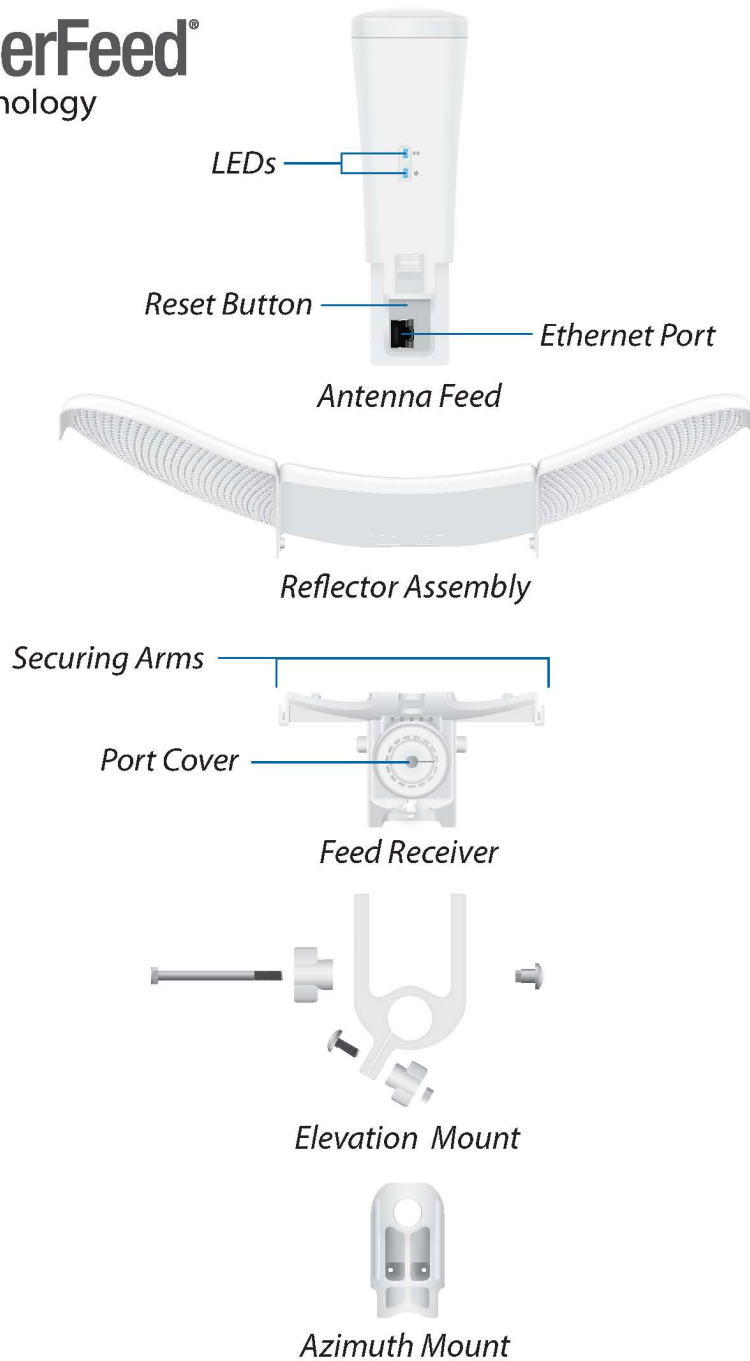
The LiteBeam AC mounted outdoors without the reflector installed provides outdoor-to-indoor coverage using the 3 dBi *Antenna Feed* only.



Hardware Overview



Bottom View

InnerFeed[®]
Technology



LEDs



-  **Ethernet** The LED will light steady blue when an active Ethernet connection is made and flash when there is activity.
-  **Power** The LED will light blue when the device is connected to a power source.

Button

Reset To reset to factory defaults, press and hold the *Reset* button for more than 10 seconds while the LiteBeam AC is powered on. The LiteBeam AC may also be reset remotely using the auxiliary *Reset* button located on the bottom of the *Gigabit PoE* adapter.

Port

Ethernet Supports 10/100/1000 connections and passive PoE. This port should be connected to the LAN and DHCP server.